

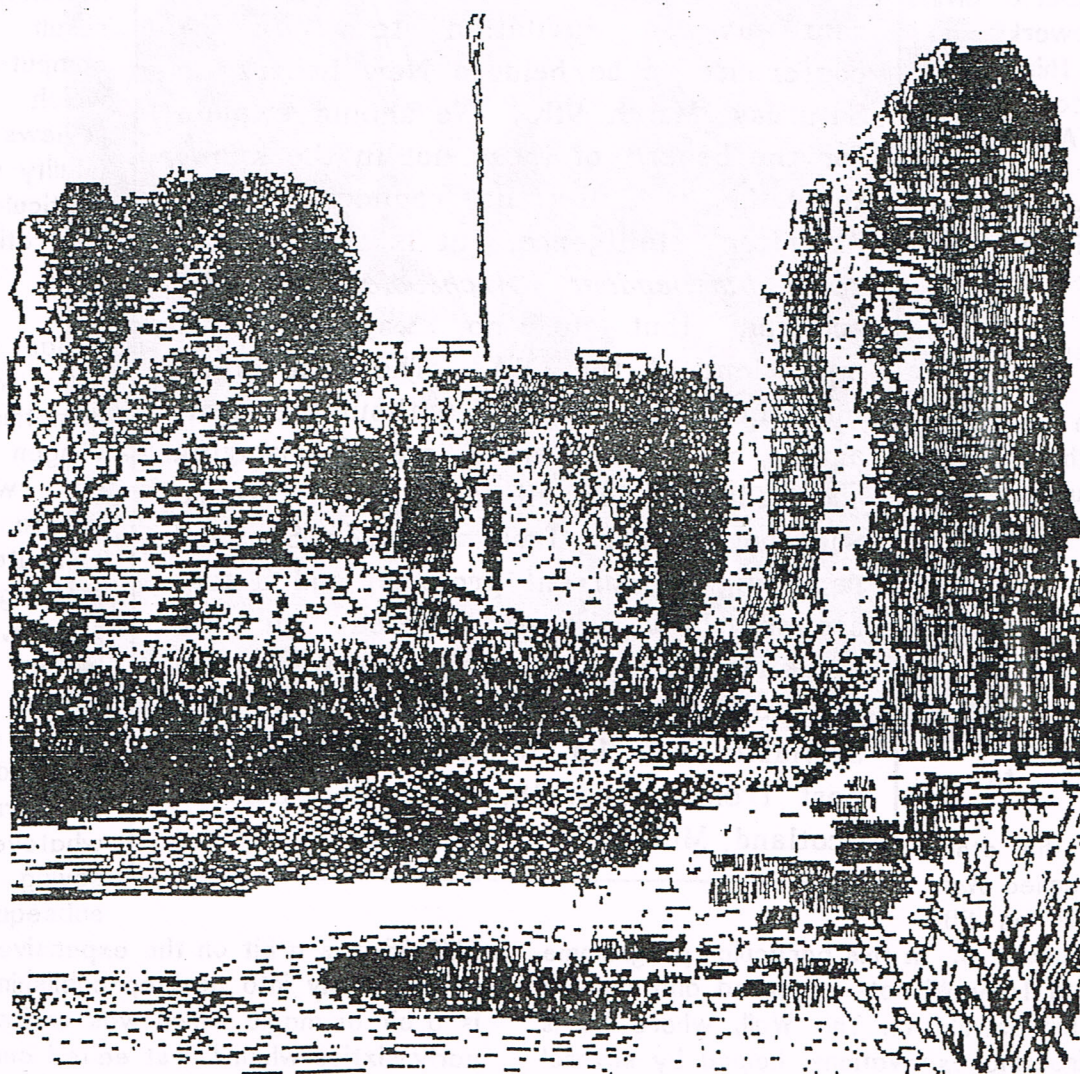
# PONTARCH

Pontefract & District Archaeological Society:



Editor: Eric Houlder, Past President, c/o The Museum, Salter Row,  
Pontefract ☎ 702995. (Home)

NUMBER 14,  
SPRING 1991



*The Keep, Pontefract Castle, from an old school History book in the collection of the Editor. Judging by the state of the ruins, we may guess that it was drawn before the excavations of the 1880s.*

# News and Comment.

## New Book on the Civil War.

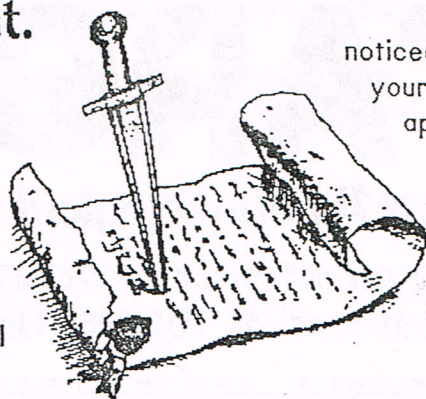
An American author has recently contacted your editor in connection with a book he is writing on the archaeology of the Civil War in England. Nineteen years ago the Editor and Michael Leach (member) undertook several aerial sorties to photograph the area with the new *Infrared Ektachrome* film. One of the discoveries was a probable Civil War siegework on Baghill. This was reported to CBA(4) and the YAS, as is customary, and it is from these records that the picture was traced back to the Editor. The correspondent is also interested in the trench from the same period that we excavated under Tony Wilmott on Tanner's Row in 1985.

## Television Exposure.

My attention was drawn to a children's TV programme the other day. It is called *Now Then!* and is on BBC at 4-45 on Tuesdays. In this particular programme our old friend Tony Wilmott appeared and showed us around Birdoswald on The Wall, where he is currently directing excavations, helped by several of our members, who for some reason are showing reluctance to give us a progress report on their work there!!!

## New Society.

Readers of *Current Archaeology* may have



noticed a request under your Editor's name. The appeal is for people to join A.S.P.A., or the *Archaeological site Photographers' Association*. If you are

seriously interested in site photo- have a word with me soon.

## Reviews.

Readers know by now I hope, that much of the interest in this newsletter is the result of various computer programs which the Editor reviews for a certain quality supplement! In particular, the illustrations in this issue are produced with a wonderful gadget called *ProScan*, which looks something like a Clington ship attached by wire to an interface on the computer. By gently stroking it along a picture, it puts the picture onto screen where it can be cleaned up, inverted, turned into a mirror-image, or whatever, before saving to disc for subsequent use. At



Ed.Archer, whom some of our older members will remember from his days as a junior member in the early sixties, has sent us an invitation to the CIA conference to be held in New Lanark on Saturday, March 9th. We should explain for the benefit of those not in the know, that the CIA has no connection with American intelligence, but is the *Council for Independent Archaeologists*, the amateur (but in no way inferior) equivalent of the CBA. The cost is £9 including a full meal, £6 without the meal, and his members are arranging accomodation for all delegates. There will be speakers from all over Scotland reporting on current projects, and a trip around New Lanark, noted for its Industrial Archaeological remains from the Industrial Revolution. Tickets are available from Ed. on 0555 2683, or by post from him at 18, Hope St., Lanark, Scotland, ML11 7NE.

£179-95 it is a bit on the expensive side for those not seriously into desktop publishing, but it really is a bit of magic which was undreamed of in the early sixties when I first edited our newsletter. I also review books, both for the above-mentioned supplement, and for *Local History Magazine*, which, after *current Archaeology* is compulsory reading for members! If you would like to subscribe to *Local History*, please see me for the address and details.

## SWALES' YARD SCENE.

Recently I was given the chance to review a wonderful gadget, a digitiser. This converts a picture into a form which will print out without needing ¼-tone blocks.



# URGENT: AMENDMENT TO THE PROGRAMME.

JOINT MEETING WITH PONTEFRACT LOCAL HISTORY SOCIETY.

Mr M Lister, (owner) and Mr D Haslop, (Survey Director)  
will speak about the work in:

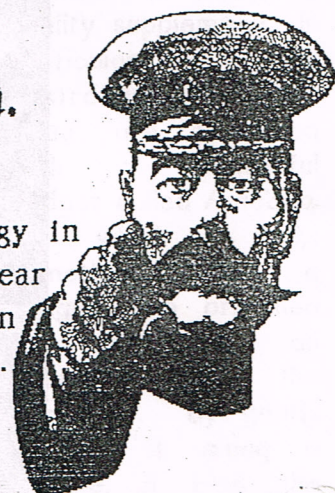
## SWALES' YARD,

on Saturday, January 26th, at 2-30.

In the Museum.

## C.B.A. Group 4 Annual Symposium.

The Annual Symposium is a must for those interested in Archaeology in Yorkshire. Each year all the work in the county is surveyed. This year it is being held in Leeds City Art Gallery, in the Town Hall, on Saturday 2nd February. Amongst the reports is one on Swales' Yard!. A booking form is appended.



---

### CBA 4 ANNUAL SYMPOSIUM

Please reserve \_\_\_\_\_ spaces: \_\_\_\_\_ members and \_\_\_\_\_ non-members.  
Fee (does not include lunch): 2.50 members, 4.00 non-members.

PLEASE TAKE THIS OPPORTUNITY TO PAY YOUR SUBS FOR THIS YEAR!

\_\_\_\_\_ I include my 1991 subscription: INDIVIDUAL 2.50  
INSTITUTIONAL : Amateur 3.50 Professional 6.00

I enclose a cheque in the amount of \_\_\_\_\_.

Name and Address: \_\_\_\_\_

\_\_\_\_\_ Tel: \_\_\_\_\_

Return to: Mary J Kershaw, Royal Pump Room Museum, Crown Place,  
Harrogate, HG1 2RY. Tel: (0423) 503340.